

**Community
Foundation**
DEKALB COUNTY

**2024
ANNUAL
REPORT**



From Our Executive Director

Community leadership plays a crucial role in fostering a sense of belonging, driving positive change, and improving the overall well-being of a community. Community Foundation DeKalb County serves as a vehicle to streamline giving, granting, and investing.

We continue to grow and positively affect more residents than ever before.

We do this by building endowments, making grants, awarding scholarships, and providing community leadership. At Community Foundation DeKalb County, we know that community leadership is essential for creating vibrant, inclusive, and thriving communities.

In 2024, the foundation continued to prioritize the county-wide strategic vision plan established just a few years ago. These priorities include addressing the need for mental health accessibility, the need for access to early childhood providers, and the need for the local trail systems to work closely to become part of the regional plan. Also recognized was the priority of developing a culture of collaboration and trust in an inviting community. These areas are still a focus of the work ahead.

The year saw another successful Giving Tuesday DeKalb campaign in which local non-profits raised over \$33,000 for their endowment funds. These funds will continue to provide spendable dollars each year to help these partners with sustainability. Other fundraising included the second annual Give Where

You Live DeKalb, which supports the Foundation's Community Grantmaking Fund. These funds allow the quarterly grantmaking opportunities to address the counties' most pressing needs throughout the year. We were fortunate to also capitalize off a matching grant through Lilly Endowment, Inc. which matched each dollar donated with two. Every dollar became three through this amazing opportunity! We also received notification in December that Community Foundation DeKalb County was a recipient of a large-scale grant of \$5 million to continue the trail work across the county.

We are so appreciative of the efforts of our staff and volunteers. Their hard work throughout the year has helped us gain new opportunities, grow existing partnerships, and unite the county and region. These individuals bring energy and passion to the organization, allowing us to grow as professional individuals, non-profit leaders, and philanthropists. It is only through the generosity of our donors, volunteers, and important community partners that the Community Foundation has been able to continue to grow and positively affect more residents than ever before within our local communities. Our endowed funds provide an ongoing stream of critical financial support through grants that help enrich education, safeguard health, improve neighborhoods, cultivate the arts, strengthen families, address poverty, and much more. Thank you for working with the Community Foundation to help create a vibrant, inclusive, and thriving community to live, work, and play!

Sincerely,

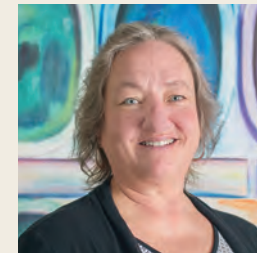
Tanya C. Young
Executive Director

Staff

Mandy Haynes, Staff Accountant

Hailey Carmer LaMaster, Program Coordinator

Jess Ambler, Project Coordinator



Board of Directors

Tasha Eicher
President

Jim Sparrow
Vice President

Angie Holt
Treasurer

Loraine Hartranft
Secretary

Barbara Olenyik Morrow
Advisor

Scott Armstrong

Allison Carnahan

Justin Clark

Becky Hefty

Judy Hey

Zach Lightner

Thomas Mason

Sue Randa

Nicholas Stephan

Norm Yoder

Our volunteer board members use their collective wisdom and expertise to guide the Community Foundation's impact on the community. Their dedication and commitment play a significant role in the Foundation's continued growth and success.



Front row: Loraine Hartranft, Tasha Eicher, Angie Holt, Jim Sparrow

Middle row: Sue Randa, Barbara Olenyik Morrow, Judy Hey

Back row: Scott Armstrong, Nick Stephan, Thomas Mason, Justin Clark, Becky Hefty

Not pictured: Allison Carnahan, Zach Lightner, Norm Yoder

Community Foundation DeKalb County Receives \$5M Gift From Lilly Endowment Inc.

Thanks to a \$5 million grant through the Giving Indiana Funds for Tomorrow initiative from the Lilly Endowment, Inc., Community Foundation DeKalb County will work toward connecting the Auburn Waterloo Trail with a trail in Allen County as part of the 81-mile Poka-Bache Connector Trail project.

Through the eighth phase of its Giving Indiana Funds for Tomorrow initiative, Lilly Endowment Inc. is awarding 30 grants totaling more than \$171 million to support the efforts of community foundations and their partners throughout Indiana to strengthen the quality of life for the people in the towns, cities, counties, and regions they serve.

Community Foundation DeKalb County will receive a \$5 million GIFT award. The Foundation will use the funds to expand the Poka-Bache Connector Trail, approximately three miles south of Auburn, to bring it closer to the Allen County trail. The timing is perfect with the recent expansion of the Auburn Waterloo Trail,

and this award will also set the exact route and design for the trail moving forward. When completed, the Poka-Bache Connector Trail will cover 81 miles, spanning four counties — Steuben, DeKalb, Allen, and Wells — eventually connecting the Pokagon and Ouabache state parks in Angola and Bluffton, respectively.

Community Foundation DeKalb County has served on the Poka-Bache Coalition since 2021 and participated in an economic impact study and supported the creation of an inter-local agreement that turned the coalition into the Poka-Bache task force. That task force comprises appointed representatives from each municipality along the trail. CFDC will be working with several entities for this and future opportunities to complete the 21 miles to be finished in the county. DeKalb County Indiana Trails, Inc. will manage the project and create campaigns to build awareness and fundraise for the long-term maintenance of the trail. Local funders will continue to be helpful with needed amenities along the trail, such as benches, water fountains, signage, and more.

Annual Meeting

Capturing the connections, conversations, and highlights that made our event so special.



Giving Tuesday DeKalb 2024 Winners

Waterloo
Grant Township
Public Library

DeKalb
Humane Society

DeKalb County
Outdoor Theater, Inc.

Auburn Waterloo
Trail

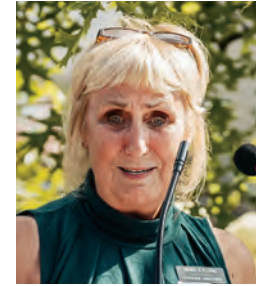
United Way
of DeKalb County

Auburn Cord Duesenberg
Automobile Museum



Changemaker Award

At the Community Foundation of DeKalb County's annual meeting, Renee Frances-Florin was surprised with the Changemaker Award for her dedicated service to the community. Frances-Florin has been the executive director of Shelter Ministries (Sonshine Ministries) since 2012, overseeing programs such as a food pantry, thrift shop, financial assistance, and a Christmas bureau. Previously an interior designer, Frances-Florin embraced a new challenge in nonprofit work, learning that community transformation requires collective effort. The Foundation described her as empathetic, creative, and caring.



Renee Frances-Florin

A leader in the Auburn Rotary Club, Frances-Florin has twice served as president, including during the pandemic, and was recently awarded the Paul Harris Fellowship Award for her outstanding contributions. She also organizes the USPS mail carrier food drive and coordinates Salvation Army bell ringing efforts. "She wears many hats," said nominator Becky Hefty, praising Frances-Florin unwavering commitment. Hefty even recalled seeing Frances-Florin, despite having a broken leg, hauling buckets of change into the bank multiple times a week, which exemplifies her relentless work ethic and devotion to her mission. Frances-Florin remains dedicated to serving others and strengthening the community—a true changemaker in DeKalb County.

Give Where You Live DeKalb 2024

Growing Philanthropy, Strengthening Our Community

Building on the success of our first annual Give Where You Live DeKalb fundraiser, the Community Foundation DeKalb County launched its second annual campaign May 6-10, 2024. This initiative supports the Community Grantmaking Endowment Fund, which fuels the Foundation's quarterly grantmaking efforts to address unmet needs in DeKalb County.

we made great progress toward our \$250,000 goal. As we move into 2025, we remain committed to this effort, with approximately \$80,000 left to raise before the December 31, 2025, deadline. Give Where You Live DeKalb will continue to be a key part of this initiative, helping us meet this goal and ensuring ongoing support for local nonprofits and community organizations.

With the incredible opportunity of the GIFT VIII matching grant from Lilly Endowment Inc., every dollar donated was tripled, significantly amplifying our impact. Thanks to the generosity of our donors and community partners,

We are grateful for everyone who participated in Give Where You Live and look forward to continuing this tradition of collective giving for years to come. Mark your calendars for the next one - May 5-9, 2025.

WAYS TO GIVE

MAIL

Community Foundation
DeKalb County
PO Box 111
Auburn, IN 46706

IN PERSON

700 S. Main St
Auburn, IN 46706
Monday - Friday
8 am - 4 pm

ONLINE



www.cfdekalb.org

Please indicate the name of the fund on your check memo line or as a designation for your online donation.

New Funds Established

One of the main goals for any community foundation is to work with individuals and organizations to design a plan and set up funds to support their causes in perpetuity. Anyone can give to these Funds. Scan the QR code below to access a complete list of available Funds. Simply open your smartphone's camera, scan the code, and tap the link.



www.cfdekalb.org

DeKalb County Early Learning Fund

Provides support for early learning initiatives in DeKalb County.



Boy Scout Troop 169 Endowment Fund

Provides support to support the mission and vision of Boy Scout Troop 169.



Hartranft Family Community Enhancement Fund

Provides support to DeKalb County's greatest needs.

DeKalb County Trails Fund

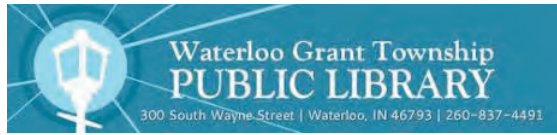


Provide support for raising awareness, expanding and maintaining the trails in DeKalb County.

DeKalb County History Preservation Endowment Fund

Provides support to the DeKalb County Historian to preserve history in DeKalb County.





Waterloo Grant Township Public Library Endowment Fund

Provides support to Waterloo Grant Township Public Library.



DeKalb County Indiana Trails Inc Endowment Fund

Provide support to the current and future work or maintenance of the trails in DeKalb County



Auburn Main Street Endowment Fund

Provides support to the mission and vision of Auburn Main Street.



Carmer Family Endowment Fund

Provides support to DeKalb County's greatest needs.



John P. and Louanne Nugen Scholarship Fund

Provides educational scholarships for students who are accepted into and attend an accredited post-secondary institution.



Wayne and Audra Sink Wilcoxson Charitable Fund

Provides support for nonprofit and charitable work.



DeKalb County Pink Out Inc. Fund

Provides support for the DeKalb County Pink Out initiative and assists DeKalb County residents with financial needs during their breast cancer journey.

Doug and Nancy Fites Scholarship Fund

Provides educational scholarships for students who are accepted into and attend an accredited post-secondary institution.



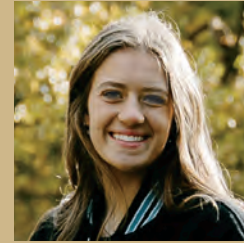
Gabe Ackerman



Matthew Beckmann



Kelsey Bergman



Ava Black



Elijah Chapman



Jenelle Combs



Timmery Hunter



Katelyn Joseph



Teagan Koble



Blayde King



Gracie Kline



Regan Nordmann



Gracie

Scholarship Recipients

If the scholarship recipient graduated high school in 2024, their school is indicated next to their name in parenthesis.

(DHS) DeKalb High School

Aim High Scholarship

Isaac Hague, Robert and Maria Hughes, Elva A. Tess Likens, Berta M. Willennar and Helping Hands
Kaitlin Traylor (DHS)

Auburn Cord Duesenberg Festival Automotive Scholarship
Jordan Eads (DHS)

The Raymond, Luella & David Aschleman Scholarship Fund
Gracie Kline (DHS)

Master Trooper James R. Bailey Memorial Scholarship
Kelsey Bergman (GHS)

The Wayne E. Boyd Scholarship
Kaitlin Traylor (DHS)

Butler Community Day Care BEE Scholarship
Jayci Kitchen (EHS)

Ben Davis Memorial Scholarship
Grant Stuckey (DHS)

The Bunge Athletic Scholarship
Jozelynn VanderHorst (DHS)
Matthias Hefty (DHS)

Don Wood Foundation Ignite Your Future Scholarship
Timmery Hunter (EHS)
William Hauptert (DHS)
Katelyn Joseph (GHS)
Matthew Dillman (DHS)
Amy Hanna
Amber Hartsough
Anton King

Dekalb County Community Scholars Scholarship
Janelle Combs

Dekalb County Master Gardeners Scholarship
Jadin Seiler (EHS)

Sarah Jean Eldridge Scholarship
Gracie Porter (GHS)
Kelsey Bergman (GHS)

Leland R. Fee Scholarship
Leah Samuelson (DHS)

Rex Feller Memorial Scholarship
Regan Nordmann (DHS)

Chuck Fifer Memorial Scholarship
Ava Black (LPCS)
Gracie Porter (GHS)

Julia Hague Scholarship
Logen Brand (DHS)

Jack & Sharon Hannes Scholarship
Matthew Beckmann (DHS)

Barbara Herzer Scholarship
Emma Williams (DHS)

Carol L. Hill Memorial Scholarship
Matthias Hefty (DHS)

Lynn and Josephine Holsinger Scholarship
Katelynn Hartsough (DHS)
Arabella Rogers (DHS)
Jozelynn VanderHorst (DHS)

Verlyn Johnson Scholarship
Gracie Porter (GHS)

Jane Elmira Mullen Kempf Communications Scholarship
Olivia Woodcox (DHS)

Jody Kessler Skilled Trades Scholarship
Makaelyn Ellison (GHS)

Don Lash Memorial Scholarship
Matthias Hefty (DHS)



Matthew Dillman



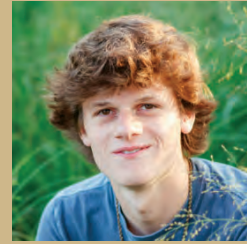
Makaelyn Ellison



Amy Hanna



Amber Hartsough



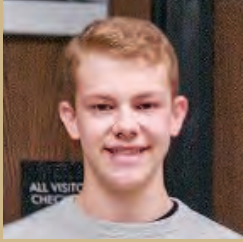
William (Will) Haupert



Matthias Hefty



Porter



C. Isaac Schweitzer



Jadin Seiler



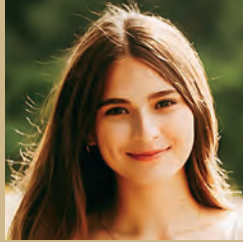
Aidan Smith



Jessica Thrush



Jozelynn VanderHorst



Emma Williams

(GHS) Garrett High School (EHS) Eastside High School (LPCS) Lakewood Park Christian School



Olivia Woodcox



Rebecca Yarian

Laurie Family Golf Scholarship
Kaitlin Traylor (DHS)

Lilly Endowment Community Scholarship
C. Isaac Schweitzer (DHS)

George Stanley and Rose Ilean Means
Logen Brand (DHS)
Matthias Hefty (DHS)
Kaitlin Traylor (DHS)
Emma Williams (DHS)
Olivia Woodcox (DHS)

Auburn Business & Professional Women's Club Scholarship
Rebecca Yarian (GHS)

Lucas A. Oberkiser Scholarship
Blayde King (DHS)

Jessica Otterst Memorial Scholarship
Jozelynn VanderHorst (DHS)

Derek L. Padilla Scholarship
Katelynne Hartsough (DHS)
Blayde King (DHS)

Parker Merit Scholarship
Matthias Hefty (DHS)

Walter S. Penfield Scholarship
Matthias Hefty (DHS)

Dr. Keith E. Perry Memorial Scholarship
Regan Nordmann (DHS)

Winifred Peters Scholarship
Jessica Thrush (GHS)

Randinelli Family Instrumental Music Scholarship
Gabe Ackerman (DHS)
Braden Koble (GHS)
Aidan Smith (DHS)

Lukas Rieke Memorial Scholarship
Elijah Chapman (GHS)

Donald Ruegsegger Scholarship For Christian Leadership
Matthias Hefty (DHS)
Jayci Kitchen (EHS)

Jon Thomas Smith Memorial Vocational Scholarship
Elijah Chapman (GHS)

Dr. James P. Spink Memorial Scholarship
Kelsey Bergman (GHS)

Starkey Science Scholarship
Matthias Hefty (DHS)

Warren G. Sunday Memorial Scholarship
Gracie Porter (GHS)

Tri Kappa Scholarship
Kaitlin Traylor (DHS)

Walters Family Memorial Scholarship
Jadin Seiler (EHS)

Robert And Virginia White Scholarship
Elijah Chapman (GHS)
Matthias Hefty (DHS)
Jayci Kitchen (EHS)
Teagan Koble (GHS)

Pat Zakula Legacy Fund
Addison Davidhizar (EHS)

Voices of Philanthropy, the Foundation's youth philanthropy pod, consists of students from all four high schools in DeKalb County who meet monthly during the school year. Their goals are to learn more about philanthropy, learn about the county's needs, raise awareness of those needs, and develop leadership skills that will benefit our community in the future.

VOICES OF PHILANTHROPY



DEKALB COUNTY YOUTH PHILANTHROPY

Voices of Philanthropy has taught me so much about DeKalb County and its nonprofits. This organization has helped me grow so much as a person and a leader, and I am truly grateful for it. I also enjoy getting to connect with students from other schools in order to make a real difference in our community. It's an honor to be part of a great program like Voices of Philanthropy.

Abby Thomas
Voices of Philanthropy's President



2024-2025 Voices of Philanthropy Members

Front Row: Atalie Gullett, Isaiah Hefty, Mollie Dick, Lily Ellison, Elena Norrick, Savannah Frey, Lily Nichter, Jacob DiDomenico, Kaitlin Keesler, Hailey Carmer LaMaster. **Back Row:** Matt Dazey, Kiersten Haynes, Lily Kreischer, Camdyn Woods, Abby Thomas, Sarah DePew, Gracelyn Martin, Campbell Warner, Addison Moughler, Melanie Nichter, Nick Frank. **Not Pictured:** Bridget Dunn, Allison Gerke

Navigators:

Nick Franz | DeKalb High School
Ryan Hathaway | Garrett High School
Matt Dazey | Eastside High School
Mallory Clifford | Garrett High School
Heidi Crider | Lakewood Park Christian School

Facilitator: Hailey Carmer LaMaster

Visually at a Glance

\$28,761,719
Total Assets

\$245,230
TOTAL
Scholarship Dollars
Awarded

\$1,818,419
TOTAL
Grant Dollars
Awarded

68
TOTAL NUMBER OF
Scholarships
Awarded

315
TOTAL NUMBER OF
Grants Awarded

152
TOTAL NUMBER OF
Organizations
Supported

Voices of Philanthropy
\$18,793 TOTAL
GRANTED
24 GRANTS
AWARDED **21** ORGANIZATIONS

13.5%
Asset
Growth

220
TOTAL
NUMBER OF
Funds

15
NUMBER OF
New Funds

Financial Performance

Financial Position

	2024	2023
ASSETS		
Cash and cash equivalents	\$2,982,364	\$1,917,351
Prepaid expenses	\$22,388	\$24,673
Pledges receivable	\$8,106	\$25,337
Right of use asset	\$2,448	\$3,994
Investments	<u>\$25,216,385</u>	<u>\$22,813,662</u>
Property and equipment		
Steinger building	\$678,746	\$678,746
Land	\$109,184	\$109,184
Office equipment	<u>\$138,807</u>	<u>\$144,626</u>
Subtotal	\$926,737	\$932,556
Less accumulated depreciation	<u>\$394,260</u>	<u>\$374,750</u>
Property and equipment total	\$532,477	\$557,806
Total	\$28,764,168	\$25,342,823
LIABILITIES		
Accounts payable	\$28,507	\$14,271
Accrued liabilities	\$1,352	\$11,492
Grants payable	\$287,578	\$285,797
Right of use liability	\$2,448	\$3,994
Agency funds	\$2,375,090	\$2,211,389
Total	\$2,694,975	\$2,526,943
NET ASSETS		
Without donor restrictions	\$382,980	\$287,908
With donor restrictions	\$25,686,213	\$22,527,972
Total	\$26,069,193	\$22,815,880
Total Liabilities & Net Assets	\$28,764,168	\$25,342,823

Statement of Activities

	2024			2023		
	Without Donor Restrictions	With Donor Restrictions	Total	Without Donor Restrictions	With Donor Restrictions	Total
OPERATING SUPPORT AND REVENUE						
Pledges and contributions	\$8,466	\$3,478,143	\$3,486,609	\$22,327	\$1,153,321	\$1,175,648
In-kind contributions		\$82,917	\$82,917		\$39,049	\$39,049
Administrative fee income	\$423,527		\$423,527	\$347,785		\$347,785
Investment return, net	\$54,967	\$2,088,699	\$2,143,666	\$21,731	\$2,542,394	\$2,564,125
Loss on disposal of equipment	(\$253)		(\$253)			
Other income				\$144		\$144
Total	\$486,707	\$5,649,759	\$6,136,466	\$391,987	\$3,734,764	\$4,126,751
NET ASSETS RELEASED FROM RESTRICTIONS						
Satisfaction of purpose restrictions	\$1,682,927	(\$1,682,927)		\$604,549	(\$604,549)	
Net assets released from restrictions pursuant to spending policy	\$808,591	(\$808,591)		\$751,260	(\$751,260)	
OPERATING EXPENSES						
Program services						
Grantmaking	\$2,233,566		\$2,233,566	\$1,174,460		\$1,174,460
Supporting services						
Management and general	\$628,148		\$628,148	\$531,546		\$531,546
Fundraising expenses	\$21,439		\$21,439	\$69,112		\$69,112
Total	\$2,883,153		\$2,883,153	\$1,775,118		\$1,775,118
Change In Net Assets	\$95,072	\$3,158,241	\$3,253,313	(\$27,322)	\$2,378,955	\$2,351,633
Net assets at beginning of year	\$287,908	\$22,527,972	\$22,815,880	\$315,230	\$20,149,017	\$20,464,247
Net assets at end of year	\$382,980	\$25,686,213	\$26,069,193	\$287,908	\$22,527,972	\$22,815,880

The Community Foundation is supported by the DeKalb County Fund for the Future, Inc. and the Steinger Center for the Community Foundation of DeKalb County, LLC.

Memorials from Donors

George & Lois Armstrong Sr.
David J. and Linda L. Winebrenner

Raymond and Luella Aschleman
Sandra K. Aschleman

Master Trooper James R. Bailey
Amy Bailey

Rita Baird
Terri G. Hague
Sandra K. Aschleman
Michael and Crystal Hite

Kathy Bassett
Steven A. and Janelle H. Graber

Keith Beck
Norman E. and Peggy J. Yoder

Joni Boehmer
J. Bryan Nugen, Nugen Law

Dr. and Amelia Bowman
Dennis L. and Mary Ann Ketzenberger

Suzanne Brand Butler
Thomas Betz

Stan Bremer
J. Bryan Nugen, Nugen Law

Steve Bruns
Norman E. and Peggy J. Yoder

Karen Bueker
J. Bryan Nugen, Nugen Law

Louise Call
J. Bryan Nugen, Nugen Law

Jane Carmer
Community Foundation DeKalb County
Board and Staff
Jeffrey G. LaMaster and Hailey E.
Carmer LaMaster
Penelope Getz
Michael and Kay Kunce
Timothy G. and Donna M. LaMaster
Karen M. Rupert
Anne M. Sullivan
Richard A. and Peggy A. Van Horn
Barbara L. Boerger
Randy and Cheryl Dunn

Kevin O'Malley
Jane Carmer Trust
Timothy E. and Amanda S. Haynes
Charles C. and Tanya C. Young

Beth Carper
J. Bryan Nugen, Nugen Law

Robert A. Cashdollar
Karen L. Cashdollar

LaVon Collins
Susan L. Randa

Peggy Dirksen
Thomas R. Neeld

Lynn Ealing
J. Bryan Nugen, Nugen Law

Paul Ealing
J. Bryan Nugen, Nugen Law

Dean Everetts
J. Bryan Nugen, Nugen Law

Beverly Fenker
J. Bryan Nugen, Nugen Law

Irene Goe
J. Bryan Nugen, Nugen Law

Arkie Haiflich
Charles L. Laurie

Maxine Harvey
Norman E. and Peggy J. Yoder

James Hatfield
J. Bryan Nugen, Nugen Law

Larry Heffley
J. Bryan Nugen, Nugen Law

Roger Hitzfield
J. Bryan Nugen, Nugen Law

Richard Hoesly
Susan L. Randa

Maurice Hooley
J. Bryan Nugen, Nugen Law

Tom Jinnings
J. Bryan Nugen, Nugen Law
JaBraun Knox
Larry E. and Becky Smith

Doris Kray
J. Bryan Nugen, Nugen Law

Braydin Lewis
Adam Lewis
Pete Wirges
Jason Wagner

Richard Lieb
Margaret A. Lieb

Cynthia Malcolm
J. Bryan Nugen, Nugen Law

Imogene Mavis
Norman E. and Peggy J. Yoder

Bev Mawe
J. Bryan Nugen, Nugen Law

Donald T. and Frances R. Mefford
Stanley A. Mefford

Eileita Miller
J. Bryan Nugen, Nugen Law

Colleen Molina
J. Bryan Nugen, Nugen Law

Hertha Moran
Maureen T. Shippy

Fred Myers
J. Bryan Nugen, Nugen Law

David Neal
True People Solutions Inc.

Keith Nelson
J. Bryan Nugen, Nugen Law

Don Nicole
Cheryl Nicole

Dennis Oberlin
J. Bryan Nugen, Nugen Law
Marcia S. Blomeke
Crystal Hite

Timothy E. and Amanda S. Haynes
Clyde W. and Sally J. Kelly
Charles C. and Tanya C. Young
Sandra K. Aschleman
Maureen T. Shippy
Steven A. and Janelle H. Graber
Community Foundation DeKalb
County Board and Staff
Kathie J. Kock
Terri G. Hague
Auburn Dental Associates, PC
Cheryl A. Clark
David J. and Patricia Curry
Robert A. and Carma Gaier
Robert B. Kiefer
Thomas A. Knurek
John Lorenzen and Kenneth L. White
Dr. Douglas C. and Barbara
Olenyik Morrow
Christopher G. Oberlin
Dr. Gary A. and Kathleen Scheumann
Richard G. and Suzanne C. Shankle
Drs. David A. and Judith J. Sorg
John M. Cohen

Susan Ogden
J. Bryan Nugen, Nugen Law

Ronald W. Payton
Sheri L. Strong

Charles Phillips
J. Bryan Nugen, Nugen Law

Vinnie Pietracatella
Norman E. and Peggy J. Yoder

Bernie Prebyski
Maureen A. Prebyski

Riley and Ajax
Sheri L. Strong

Myron Schaadt
J. Bryan Nugen, Nugen Law

Charles T. Schmidt
Mary K. Schmidt

Bill Sibert
J. Bryan Nugen, Nugen Law

Noreen Sidener
J. Bryan Nugen, Nugen Law

Steve Silberg
J. Bryan Nugen, Nugen Law
Charles L. Laurie
Mike and Becky Slentz
Cheryl E. Rogers

Dakota Smith
Larry E. and Becky Smith

James & Pauline Smith
Norman E. and Peggy J. Yoder

Leroy Smith
J. Bryan Nugen, Nugen Law

Sylvia Southern Sorg
David L. and Mary E. Southern

Rosemary Sprunger
Mark Swaim

Lowell Stuckey
Joyce Stuckey

Kathie Swaim
Mark Swaim

Sally Thrush
True People Solutions Inc.

Dr. Michael Webb
David L. and Jayne A. McClellan

Josh Wilson
Alvin L. and Sundaye Hook

Robert Woodward
J. Bryan Nugen, Nugen Law

Richard Yanuzeski
J. Bryan Nugen, Nugen Law

Annabelle Yoder
Norman E. and Peggy J. Yoder

Everett Yoder
Norman E. and Peggy J. Yoder

Sharon Zimmerman
True People Solutions Inc

Gifts from Donors

William F. and Cynthia K. Akey	Loretta I. Blevins	Courageous Healing, Inc	FCI Construction	Healthies Auburn DeKalb LLC	Lewis King
Holly A. Albright	Marcia S. Blomeke	Covington Box & Packaging, Inc	Fred C. and Mary Anna Feitler	David W. and Stacy E. Hefty	Kendra Klink
Allstate Life Insurance Company Live and Annuity Claims on behalf of George Witwer's Estate	James E. Blume, O.D. Optometrist	Calvin R. and Kim H. Culbertson	Jean A. Ferrell	Rebekah K. Hefty	Rodrick O. and Barbara J. Knox
Kathleen Alter	Barbara L. Boerger	David J. and Patricia Curry	Nancy E. Fites	Stephanie A. Helgesen	Thomas A. Knurek
Amani Family Services, Inc.	Daniel B. Bonkoski	Katrina H. Custer	Renee A. Florin	Gary J. and Nancy K. Helmkamp	Kathie J. Kock
Ambassador Enterprises, LLC	Margie A. Bortner	D & B's Copy Systems, Inc	Kristen Follis	Tedra Hemingway	Krehl Acres LLC, Twylla Krehl
Brandon J. Anderson	Geri Boyden	Daniel F. and Carol S. Davis	Jacob L. and Heather J. Ford	Henry Enterprises LLC	Kyle Krish
API Construction Corp	The Brandon Foundation Inc	Joan Davis	Fort Wayne Youtheatre, Inc	Michael K. and Judy K. Hey	Kruse & Kruse, PC
Dr. Scott Armstrong	Hulen and Susan R. Branscum	Cindy Dawson	Fortify Life	Katelyn High	Michael and Kay Kunce
John P. and Brenda A. Armstrong	Ron and Michelle Bratton	Randall J. Deetz	Fremont Youth and Community Outreach, Inc	Mitzi Hilkey	Ladies of Literacy Club of Auburn
Dawn R. Aschleman	Debra Kern Brenner	Mary Jo Deihl	Friends of ClaraMary Winebrenner	The Hines Family Charitable Fund	Lake City Bank - Auburn Branch
Sandra K. Aschleman	Brown & Brown Insurance Agency, Inc	DeKalb County Horsemen's Association	Frontline Exterior Cleaning	Joanne Hinman	Jeffrey G. LaMaster and Hailey E. Carmer LaMaster
David L. and Deborah K. Ashenfelter	Dean Brown	DeKalb County Master Gardeners	Bret Gage	Michael and Crystal Hite	Timothy G. and Donna M. LaMaster
Ashley Industrial Molding, Inc.	Thomas L. Bryant	DeKalb County Outdoor Theater, Inc.	Robert A. and Carma Gaier	James A. and Jackie A. Hoff	Denise Landers
Auburn Arts Commission, Inc	Chad M. and Jenny N. Buchs	DeKalb County Visitors Bureau	Ray and Joan Garbaciak	Joy A. Hoke	Lassus Brothers Oil Foundation
Auburn Church of Christ	Margaret R. Buttermore	DeKalb Humane Society, Inc.	Garrett State Bank	Ronald E. and Wendy S. Holben	Charles L. Laurie
Auburn Dental Associates, PC	Susan M. Buttermore	DeKalb Post 97 American Legion	Penelope Getz	Lyle E. Holman	Thomas S. and Patricia A. Laverghetta
Auburn Family Dentistry	Carbaugh Jewelers	The Dekko Foundation	Gibson's Heating and Plumbing, Inc	Angie L. Holt	Kayleen M. Leonard
Auburn Gear, Inc. Employees	Jane Carmer Trust	Erica D. Dekko	Godfathers MC Charities Inc	Bruce S. and Carol J. Holwerda	Jim and Luanne Letizia
Auburn Heating & Air Conditioning, Inc	Allison Carnahan	Ben L. and Sarah L. Dempsey	Dr. William D. and Mary Goudy	Alvin L. and Sundaye Hook	Adam Lewis
Auburn High School Class of 1962	Susan M. Carpenter	Dependable Metal Treating, Inc.	Steven A. and Janelle H. Graber	Delores A. Howarth	Kristen Lewis
Auburn Main Street	Karen L. Cashdollar	Ronald W. and Constance S. Dicke	Grace College & Seminary	Linda S. Huff	Michael D. and Sara P. Ley
Auburn Presbyterian Church	Kent Castleman	Craig DiScala	Kyla Graham	Leta M. Hullinger	Larry and Rita Lichtsinn
Auburn Presbyterian Church Boy Scout Troop #169	Echo Marie Catterall	Karen DiScala	Michael Graham	Denise A. Baird Impton	Margaret A. Lieb
Auburn Waterloo Trail	John E. and Cheryl S. Chalmers	Don Wood Foundation	Kevin R. and Pamela A. Gramling	Independent Colleges of Indiana, Inc	Lightner Law Firm
Amy Bailey	James A. Chambers	Jeffrey and Carrie Dunn	Grasshopper Mowing	Indiana Department of Natural Resources	Lilly Endowment Inc
Carl and Suzon Baker	Charleston Metal Products, Inc	Randy and Cheryl Dunn	Cristy M. Greene	The Italian Grille	Susan L. Link
Steve Baker	T D and Silene B. Cheek	Eastside Junior/Senior High School Soccer	The Griggs Family Giving Fund	The James Foundation, Inc	Josh Littlejohn
Phillip A. and Carole J. Bard	Kathryn K. Chizmar	Marlin J. and Natasha L. Eicher	Karen S. Griggs	Kay Jehle	John Lorenzen
Arthur C. and Karen K.(Yoder) Bartlett	City of Auburn	Beth A. Eis	Jen and Colin Gulling-Coberly	Anna S. Johnson	Loyal Order of Moose Lodge #566
Thomas Bassett	Cheryl A. Clark	Anne Eidam	GVC Mortgage	Dora A. Johnson	Make-A-Wish Foundation of Ohio, Kentucky & Indiana
Mark L. and Kelly A. Beakas	Justin Clark and Kelly Thomas	Richard N. and Mildred F. Emmelhainz	The H. C. S. C. Club	Kappa Kappa Kappa Sorority (Alpha Pi Chapter)	Dean A. and Kathy J. Malcolm
Edward C. Benbow	Stewart A. and Patricia P. Clark	Erin's House for Grieving Children, Inc	Darle E. Hagan	Kappa Kappa Kappa, Inc., Auburn Associate Chapter	Ruth M. Nix Malcolm
Nina E. Bennett	Classic City Body and Paint Inc	Estep Burkey Simmons, LLC	Terri G. Hague	Michael L. and Mary P. Kay	Tracy Maloy
Brian and Jennifer Betts	Clear Creek Business Solutions LLC	ETA Engineering, Inc	John Harker	Clyde W. and Sally J. Kelly	Dr. Thomas P. and Kathleen Mason
Thomas Betz	John M. Cohen	Cassie Evans	Curtis L. Harriman	Colleen M. Kempf	David L. and Jayne A. McClellan
BF Goodrich	Olive B. Cole Foundation, Inc	F&M Bank	Greg Hart	Kendallville Elks #1194	Leonard R. McCollough
Toby M., Valerie L. and Mataya Bireley	Gregory A. Collins	Family Dollar Distribution Center	Robert and Kathleen Hart	Jay R. and Sandra K. Kern	Patricia N. McGill
	Color Master Inc	Dr. James O. and Karen A. Farlow	Loraine Hartranft	Dennis L. and Mary Ann Ketzenberger	Stanley A. Mefford
	Community Foundation DeKalb County	Farm Power Club Inc	Reva Hatfield	Robert B. Kiefer	Connie J. Menzie
	Concord Township Volunteer Fire Department	Sue Faust	Carol Jean Hathaway	Kim's Komer Music & More LLC	
	Betty Conrad		Dr. K. Michael and Sandra Hayes		
			Timothy E. and Amanda S. Haynes		

Ian A. and Paula M. Mercer
Kenneth D. Metzger
Belva C. Meyer
Sidney B. Meyer
Midwest Eye Consultants, P.C.
James A. and Diana L. Miller
Lyndsay Miller
Cherish Mishleau
MLK Montessori School
John M. and Deanna L. Mohre
Dr. Douglas C. and Barbara
Olenyik Morrow
Todd A. and Carolyn K. Moughler
Peter C. Mountz
MRS Point of View
Mark Music
My Autism Ally Inc
Jonathan Corey and Jovita J. Nack
Janet L. Nagel
Thomas R. Neeld
Cheryl Nicole
Marian C. Nilsen
Nucor Building Systems Indiana
Nucor Fastener Indiana
Nucor Insulated Panel Group -
Waterloo
J. Bryan Nugen, Nugen Law
John P. and Luanne Nugen
Christopher G. Oberlin
Kevin J. and Tamzon A. O'Malley
Betty J. Owens
Parker Hannifin Corporation
Jon and Sharon L. Payne
Peoples Charitable Foundation on
behalf of Russell and Garnet
Spice
Phyllis Perry
Robert Pfister
Wanda L. Phillips
John J. Piatek
Steven Pierzchala
Steven E. and Nicki D. Post
Virginia A. Post
Daniel B. and Patrice M. Potter
David L. and Veronique Poudrier

Maureen A. Prebynski
Brenda Prosser
Susan L. Randa
Kimberly A. Randinelli
Ruth E. Randinelli
Grandchildren of Jerry Rathburn
Terry L. and Mary Ellen Rayle
Carol S. Reese
Harley H. and Judy K. Rensch
Carole E. Reynolds
Rieke Corporation Foundation
Eric T. and Marilyn Rieke
Glenn and Thelma Rieke
Foundation
Richard S. and Alaina L. Ring
Dr. James A. and Rachel S. Roberts
Kirk A. and Jacqueline A. Robinett
Vicki Rodkey
Kim E. Rodriguez
Cheryl E. Rogers
Rose Bros
Jennifer Rothenberger
Route 6 Diner LLC
Brian D. and Joy L. Ruegsegger
Karen M. Rupert
Jerry B. and Arlene A. Samuelson
Dr. Gary A. and Kathleen
Scheumann
Nick Scheumann
Larry Schlegel
Michelle L. Schlotterback
Dr. Daniel L. and Rebecca Schmidt
Mary K. Schmidt
Schools Care Inc
Corey Schoon
Molly K. Schuman
Seiler Excavating, Inc
Larry W. and Donna M. Seiler
Service Steel Framing, Inc
Richard G. and Suzanne C. Shankle
Guy and Laura Shatto
Tracy L. and Gretchen L.
Shellabarger
Shifters Car Club, Inc

Maureen T. Shippy
Gary B. and Sherri A. Sible
Jerry L. Sigler
Mary E. Simcox
Emily F. Simpson
Mary M. Smaltz
Shelley C. Smaltz
Barry A. and Leabeth Smith
Gretel Smith
Larry E. and Becky Smith
Steve and Lesa Sofhauser and
Dell Giving on behalf of Steve
and Lesa Sofhauser
Dr. David A. and Dr. Judith J. Sorg
David L. and Mary E. Southern
James S. Sparrow
Harold J. and Sandra L. Spiess
William J. and Maryann P. Spohn
St. Martin's Healthcare, Inc
Myron D. and Mary Jane
Stackhouse
James W. Stahl
Star Technology, Inc
Steel Dynamics, Inc - Butler
Steel Dynamics, Inc. - Columbia
City
Nicholas and Melissa Stephan
Steuben County Community
Foundation
Ryan Stewart
John E. and Sue R. Stoops
Sheri L. Strong
Joyce Stuckey
Anne M. Sullivan
Robert and Renee Sullivan
Suntken Realty Group LLC
Super Shot Inc.
Surack Family Foundation
Dennis D. and Joanne Sutton
Mavis M. Sutton
Mark Swaim
Richard P. and Lisa M. Teets Jr.
Texas Roadhouse - Auburn
Therma-Tru
Troy Center, Inc

True People Solutions Inc
Michael J. and Elly Tullis
James B. Turcovsky
W. Duane and Herma F. Tuttle
United Way of DeKalb County, Inc.
Richard A. and Peggy A. Van Horn
Dennis and Linda VanZile
Greg Vick
Villa Of Coventry Homeowners
Association
Dr. Douglas C. and Barbara
Olenyik Morrow - Vision Source
Vulcraft Indiana
Brenda Wagner
Gary L. and Mary A. Wagner
Jason Wagner
Robert and Cathy Walker
Drew E. and Nicole Wallace
Rick A. Walters
Andrew and Olivia L. Warner
Kenneth D. Warstler
Michael and Marion Watson
Tonya K. Weaver
Florence J. Webb
Gregory J. and Marcia K. Weller
Myla J. Wells
Timothy L. Wentzel
Gary and Donna Westby
Kenneth L. White
Darryl L. and Susan E. Whittington
Cindy Whitton
S K and C R Whitton
Patrece Whitworth
Audra J. Wilcoxson
Kenneth L. Wilcoxson
Robert L. Wilder
Laura Wills
Wilson's Sewer Line Service LLC
David J. and Linda L. Winebrenner
Pete Wirges
The Brandon and Elizabeth Wolf
Charitable Donor Advised Fund
Women's Care Center Northeast
Indiana
Workers World Inc

Kenneth D. and Norma J. Workman
Lena M. Yarian
Lisa A. Yarian
YMCA of Steuben County, Inc

Norman E. and Peggy J. Yoder
Charles C. and Tanya C. Young
Mark K. and Nancy A. Zion
Jerry L. and Sharon R. Zonker

Tributes

In Honor of the
**Garrett Railroaders
Regional Football Title**
By Ryan Stewart

In Honor of
Kelley Hartranft
By Loraine Hartranft

In Honor of
Judy Hey
By Jennifer Rothenberger

In Honor of
Angie Holt
By Kathleen Alter
By Charles C. and Tanya C. Young
By Timothy E. and Amanda S.
Haynes

In Honor of
Kent Johnson
By Carol S. Reese

In Honor of
Jay Kern
By Debra Kern Brenner

In Honor of
**Lakewood Park
Christian School**
By Kenneth D. and Norma J.
Workman

In Honor of
Kayleen Leonard
By Loraine Hartranft

In Honor of
Wendy Oberlin
By John M. Cohen

In Honor of
Richard Shankle
By The H.C.S.C. Club

In Honor of
Tammy Stafford
By Lena M. Yarian
By Katrina H. Custer
By Dr. Daniel L. Schmidt
By Lisa A. Yarian
By Ashley Industrial Molding, Inc.
By Geri Boyden
By Anne Eidam
By Sue Faust
By Denise Landers
By Carl and Suzon Baker
By Hulen and Susan R. Branscum
By D & B's Copy Systems, Inc
By Gary J. and Nancy K. Helmkamp
By Michael L. and Mary P. Kay
By St. Martin's Healthcare, Inc
By Jonathan Corey and Jovita J. Nack

In Honor of
**Jason and Kristen
Wagner**

By Craig DiScala
By Kay Jehle
By Larry Schlegel
By Steve Baker
By Kyla Graham
By John Harker
By Kyle Krish
By Brenda Prosser
By Brenda Wagner
By Kristen Follis
By Michael Graham
By Karen DiScala
By Cindy Dawson
By Patrece Whitworth



Community Foundation

DEKALB COUNTY

Stay Connected With Us



700 South Main Street • P.O. Box 111
Auburn, IN 46706 • 260-925-0311
www.cfdekalb.org
Email: info@cfdekalb.org

