

# Resiliency through Adversity



**Community  
Foundation**  
DEKALB COUNTY

**2022 ANNUAL REPORT**

# LETTER FROM THE EXECUTIVE DIRECTOR



## Many new community partnerships were formed and strengthened

At the Community Foundation DeKalb County, we work closely with individuals and families to help caring people give back to the causes and community they care about most. We also partner with professional advisors and non-profit organizations to build on the collective philanthropic strength of our communities as we lead the way forward on critical local and regional issues.

Only through the generosity of our donors and community partners has the foundation continued to grow and positively impact more residents than ever within our local communities. Our endowed funds provide an ongoing stream of critical financial support through grants that help enrich education, safeguard health, improve neighborhoods, cultivate the arts, strengthen families, address poverty, and much more.

In 2022, many new community partnerships were formed and strengthened to rise to the challenge of ever-changing needs. The year saw another successful Giving Tuesday DeKalb campaign in which local non-profits raised over \$119,000 for their endowment funds. These funds will continue to provide spendable dollars each year to help these partners with sustainability.

Our community foundation was able to partner with stakeholders from DeKalb County to create a process and strategy for developing a county-wide strategic vision. The work brought several dozen community stakeholders together over a three-day workshop and allowed five listening sessions for the general public across the county.

We heard from residents who have not felt invited or included. And with much input, priorities for the future of DeKalb County were identified. These priorities have been shared and are being utilized to create and expand strategic plans throughout the county. The positive impact of this work is already being seen.

Leadership is critical to the work of the community foundation. We are grateful for a long-term board member, Terry Rayle, and his past ten years of commitment to the board of directors. One of our founding board members, Bryan Nugen, returned to serve another six years, and we are thankful to him for that additional time as he stepped down in 2022.

We are so appreciative of the efforts of our staff. Their hard work throughout the year has helped us gain new opportunities and grow existing partnerships across the county and region. This team brings energy and passion to the organization, allowing us to grow as professional individuals and non-profit leaders.

Resiliency through adversity makes DeKalb County a wonderful place to live, work and play. Thank you for supporting this challenging journey as we continue moving forward, making the best of the detours and interruptions, and turning adversity into an advantage.

Sincerely,

A handwritten signature in blue ink that reads "Tanya C. Young". The signature is fluid and cursive.

**Tanya C. Young**  
Executive Director



# 2022 Board of Directors



Barbara Olenyk Morrow  
President



Tasha Eicher  
Vice President



Angie Holt  
Treasurer



Loraine Hartranft  
Secretary



Bryan Nugen  
Advisor



Scott Armstrong



Allison Carnahan



Justin Clark



Becky Hefty



Judy Hey



Zach Lightner



Melissa McLaughlin



Sue Randa



Terry Rayle



Jim Sparrow



Norm Yoder

# Highlights

## Nonprofit Development Series

In 2022 the Community Foundation, DeKalb Chamber Partnership, and United Way of DeKalb County collaborated to host a nonprofit development series for the nonprofit organization that are located in, and/or serve DeKalb County. We asked the organizations what topics they wanted to learn more about. The result was 4 quarterly seminars covering topics like; recruiting and maintaining employees, developing a good board, and effective grant writing. The series was very well received and will continue in 2023.



## Auburn Waterloo Trail

The Auburn Waterloo (AW) Trail has been around since 2014 and has stayed busy fundraising and maintaining the AW Trail that runs from Morningstar Drive, north to Waterloo. The AW Trail will become part of the Poka-Bache Connector trail, a state-wide trail that will run from Ouabache State Park in Bluffton to Pokagon State Park in Angola. The 81-mile connector trail will connect Steuben, DeKalb, Allen, and Wells counties and will be one of the longest continuous trails in the state. Before that can happen, the AW Trail needs to be widened as it is not currently 10' in width. The AW Trail, with help from the Community Foundation, wrote a grant to the Indiana DNR to update the trail. The grant was approved, and work will be done over the next two years to widen the trail to 10' in width. This widening will also give walkers and bikers more room to harmoniously co-exist on the much-traveled trail.



## Giving Tuesday DeKalb

Giving Tuesday often described as a global day of giving or a global generosity movement, is held each year on the Tuesday following Thanksgiving. While nonprofits fundraise for their operating budgets on this day, the Community Foundation fundraises to grow the endowments of nonprofits who have funds at the Foundation. Giving Tuesday DeKalb 2022 kicked off on October 1st with 25 nonprofit organizations participating. A total of \$119,000 was raised and the top three nonprofits were: Auburn Waterloo Trail raising \$40,850; St. Martin's Healthcare raising \$22,440; and DeKalb Outdoor Theater raising \$9,000. The top three organizations received an unrestricted grant: 1st Place-\$5,000, 2nd Place-\$3,000, and 3rd Place-\$2,000. Congratulations to all organizations that participated.



St. Martin's Healthcare



Auburn Waterloo Trail



DeKalb Outdoor Theater



## Northeast Indiana Regional Early Childhood Coalition (NIRECC)



The NIRECC, consisting of 11 counties in NE Indiana, was formed in 2021 to study and address the issues with the lack of early childcare centers in the area. The Coalition is made up of representatives from 11 counties. The Coalition is helping each county create a steering committee to study and address needs in that county. The Community Foundation is a member of the Coalition and is working with the DeKalb Chamber Partnership to create a DeKalb County Steering Committee. The NIRECC.



## 2022 Annual Meeting

The Community Foundation holds an annual meeting every year to update the community on what the Foundation is doing with and in the community. In 2022 the format for the annual meeting was changed to an open house. The agenda and atmosphere were casual and lent well to mingling, nibbling, and learning. The apex of the evening was the awarding of the 2022 Changemaker Award to Tom Bassett for his 41 years as Scoutmaster of Auburn Boy Scout Troop 169.



## DeKalb County Vision Plan

The Community Foundation is proud to be a part of the DeKalb County community. We constantly strive to be present in the county and work to make DeKalb County a better place to live for all. During the spring of 2022, the Community Foundation DeKalb County invited county leaders from the private, nonprofit, and municipal sectors to participate in a 2.5-day workshop to discuss the future of the county and the benefits of having a county-wide vision. The workshop was facilitated by the Indiana Communities Institute out of Ball State, and the Creative Insight Community Development consulting group. The workshop was followed by five listening sessions held all over the county to give all citizens a chance to express their thoughts and wishes for a future in DeKalb County.



All information from the workshop and listening sessions was analyzed and used to create objectives that the community felt were priorities for increasing the quality of the future of the county. The final results were presented to the community in December. After receiving feedback from the attendees, some final revisions were made to the vision plan and was ready for viewing the end of January 2023.

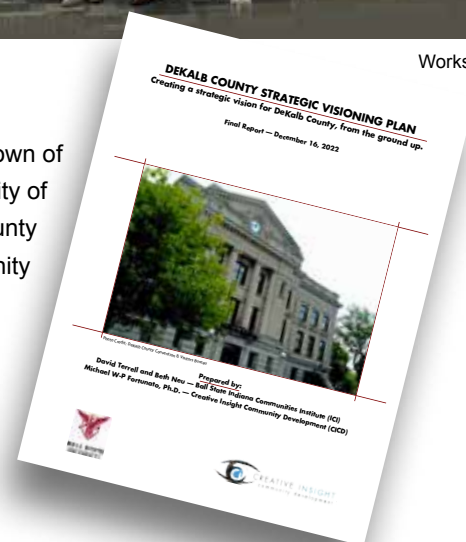
The plan is available on the CFDC website. Please visit the website and read the final version. We are anxious to hear your feedback. Feel free to contact us with any questions or comments you have about it.



Workshop attendees

The county-wide vision initiative was made possible by the support of the Town of Waterloo, the Town of Hamilton, the City of Butler, the City of Auburn, the City of Garrett, The James Foundation, United Way of DeKalb County, DeKalb County Visitors Bureau, DeKalb Central Schools, a private funder, and the Community Foundation DeKalb County.

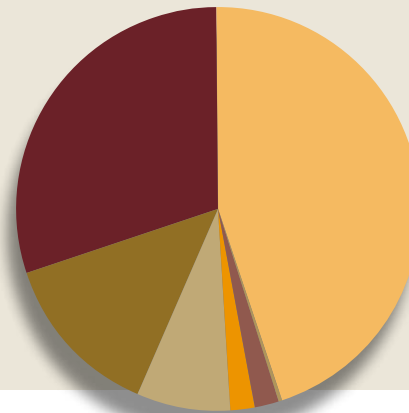
You can download a copy of the DeKalb County Visioning Plan on our website at <https://cfdekalb.org/strategic-vision/>



## Grant and scholarship awards put back into the community during the year **\$771,742**

**Total assets**  
**\$22,778,629**  
as of December 31, 2022

**Number of new funds  
created in 2022**  
**14**



### Total 203 Funds

- ◀ 91 Designated & Agency
- ◀ 61 Scholarship
- ◀ 27 Field of Interest
- ◀ 15 Donor Advised
- ◀ 4 Unrestricted (Discretionary)
- ◀ 4 Org (Agency Designated)
- ◀ 1 Org (LLC)

### Community Grants

**\$672,404 Total | Supported 152 Organizations | 314 Grants Awarded**

|                       |           |
|-----------------------|-----------|
| Human Services        | \$219,621 |
| Arts & Culture        | \$149,420 |
| Education             | \$111,001 |
| Community Development | \$107,887 |
| Health                | \$41,369  |
| Youth                 | \$33,854  |
| Environment           | \$8,252   |
| Recreation            | \$1,000   |

### Scholarships

**\$138,709 Total | 50 Scholarships Awarded**

### Mother Goose on the Loose Grants

**\$3,305 Total | 4 Grants Awarded**

### Voices of Philanthropy Grants

**\$19,131 Total | 23 Grants Awarded**

|                       |         |
|-----------------------|---------|
| Human Services        | \$7,490 |
| Health                | \$4,500 |
| Education             | \$2,091 |
| Community Development | \$2,000 |
| Arts & Culture        | \$1,700 |
| Youth Development     | \$1,350 |

# Foundation Field Trips



Ashley, Indiana Fairfield Center



Waterloo, Indiana



Hamilton, Indiana



Corunna, Indiana



Butler, Indiana



Garrett, Indiana



Spencerville, Indiana

In 2022 the staff at the Community Foundation created Foundation Fieldtrips with a desire to visit the towns in DeKalb County to get to know more about them. We had a great time and were welcomed with open arms in every location, where someone from the municipality showed us around, introduced us to a restaurant, and arranged a tour of a nonprofit and/or attraction in the town. While we didn't get a photo from every place we did manage to remember to get photos on most field trips.

We learned firsthand what makes DeKalb County so special. We have so many treasures here to celebrate. We send a sincere thank you to everyone who made our field trips so successful and SO MUCH FUN!

- This was our schedule:
- February 25 – Waterloo
  - March 25 – Corunna
  - April 22 – Ashley
  - May 27 – Spencerville/St. Joe
  - July 22 – Auburn
  - August 26 – Butler
  - September 23 – Hamilton
  - October 28 – Garrett





## A New Generation of Philanthropic Leaders

Established in 1998, DeKalb's Voices of Philanthropy is a youth philanthropy group consisting of service-minded leaders from four of the DeKalb County high schools. The Dekko Foundation and the Community Foundation of DeKalb County sponsor DeKalb's Voices of Philanthropy, working together to grow a new generation of philanthropic leaders.

DeKalb's Voices of Philanthropy meet once a month at the Community Foundation of DeKalb County. Through mentors and partnerships, the youth pod members build leadership skills, philanthropic and board skills, and learn the fundamentals of charitable giving. By interacting with local charitable organizations the members educate themselves about the community's needs. Members use their time, talent and treasure to support and enhance DeKalb County.

### 2022-2023 VOICES of Philanthropy Members



Back Row:  
 Abby Thomas  
 Isiah Hefty  
 Matthias Hefty  
 Aidan Wissing  
 Morgan Thrush (VP)  
 Kaitlin Traylor (President)  
 Lydia Sullivan (Treasurer)  
 Eleanor Neumann

Front Row:  
 Stella Mix  
 Kiersten Haynes  
 Lily Kreisler  
 Bridget Dunn  
 Sarah Depew  
 Joanie Kimpel (Historian)  
 Rebekah Johnson (Secretary)  
 Vinnie Talarico  
 Grace Kamleiter  
 Campbell Warner

Not Pictured:  
 Nate Fillenwarth  
 Addison Ebert

### Navigators:

Rebecca Pfeffer  
 VOICES Facilitator  
 DeKalb High School

Larissa Troyer  
 DeKalb High School

Marcy Winterholter  
 Lakewood Park Christian School

Matt Dazey  
 Eastside High School

Ryan Hathaway  
 Garrett High School

Mallory Clifford  
 Garrett High School

“As a member of DeKalb's Voices of Philanthropy, I have gained a plethora of knowledge about nonprofit organizations that serve in the community, and the impact these organizations have on our community. I have also developed leadership and communication skills that can be utilized my entire life. The opportunities made available through Voices of Philanthropy have allowed me to use my time, talent, and treasure to make an impact in my community. I'm very grateful to be a part of such a wonderful organization!”

- Kaitlin Traylor, VOICES of Philanthropy's President



Landon Armstrong  
DeKalb High School



Kaitlyn Bergman  
Garrett High School



Sophia Bell  
DeKalb High School



Brady Goff  
Eastside High School



Brooklyn Lockhart  
Eastside High School



Travers Mason  
DeKalb High School



Faith McClain  
Eastside High School



Ava O'Connor  
DeKalb High School

# 2022 Scholarship

**Aim High Scholarship**  
Sophia Bell

**The Raymond, Luella & David  
Aschleman Scholarship Fund**  
Carlie Taylor

**Butler Community Day Care BEE  
Scholarship**  
Brooklyn Lockhart

**Ben Davis Memorial Scholarship**  
Nicholas Conrad

**The Bunge Athletic Scholarship**  
Maddison Linker  
Travers Mason

**DeKalb County Master Gardeners  
Scholarship**  
Carlie Taylor

**Sarah Jean Eldridge Scholarship**  
Kaitlyn Bergman  
Emma Welbaum

**Rex Feller Memorial Scholarship**  
Travers Mason

**Chuck Fifer Memorial Scholarship**  
Sophia Bell

**Jack & Sharon Hannes Scholarship**  
Marcus Smith

**Barbara Herzer Scholarship**  
Sophia Bell

**Carol L. Hill Memorial Scholarship**  
Sophia Bell

**Lynn and Josephine Holsinger  
Scholarship**  
Ryann Mason  
Ryleigh Marquardt

**Jane Elmira Mullen Kempf  
Communications Scholarship**  
Eva Hallman

**JaBraun Knox Scholarship**  
Travers Mason

**Don Lash Memorial Scholarship**  
Travers Mason

**Laurie Family Golf Scholarship**  
Jackson Barth

**Lilly Endowment Community  
Scholarship**  
Rowan Tinker

**The Imogene Mavis Music Scholarship**  
Sophia Bell

**George Stanley and Rose Ilean Means  
Scholarship**  
Travers Mason  
Sophia Bell  
Eva Hallman  
Marcus Smith  
Maddison Linker

**Northeast Indiana Business &  
Professional Women Scholarship**  
Emma Welbaum

**Lucas A. Oberkiser Scholarship**  
Landon Armstrong

**Jessica Otterstedt Memorial  
Scholarship**  
Ryann Mason

**Derek L. Padilla Scholarship**  
Landon Armstrong  
Eva Hallman





Eva Hallman  
DeKalb High School



Skyelar Kessler  
Eastside High School



Elizabeth Kruse  
Lakewood Park Christian School



Maddison Linker  
DeKalb High School



Marcus Smith  
DeKalb High School



Carlie Taylor  
DeKalb High School



Emma Welbaum  
Garrett High School

Not Pictured:

Brayden Baker  
Garrett High School

Jackson Barth  
DeKalb High School

Nicholas Conrad  
DeKalb High School

Lilliah Grote

Gavin Kling  
DeKalb High School

Ryleigh Marquardt  
DeKalb High School

Ryann Mason  
DeKalb High School

Rowan Tinker  
Eastside High School

# Recipients

Parker Merit Scholarship  
Marcus Smith

Walter S. Penfield Scholarship  
Travers Mason

Dr. Keith E. Perry Memorial  
Scholarship  
Ryleigh Marquardt

Winifred Peters Scholarship  
Ava O'Connor

Randinelli Family Instrumental Music  
Scholarship  
Sophia Bell

Lukas Rieke Memorial Scholarship  
Brayden Baker

Donald Ruegsegger Scholarship For  
Christian Leadership  
Travers Mason  
Brady Goff  
Kaitlyn Bergman  
Elizabeth Kruse

Sirleine M. Smith Library Science  
Scholarship  
Lilliah Grote

Dr. James P. Spink Memorial  
Scholarship  
Travers Mason

Starkey Science Scholarship  
Gavin Kling

Walters Family Memorial Scholarship  
Carlie Taylor

Robert and Virginia White Scholarship  
Travers Mason  
Skyelar Kessler  
Emma Welbaum  
Faith McClain

Pat Zakula Legacy Fund  
Ryleigh Marquardt



Eastside senior Rowan Tinker (center) was selected as DeKalb County's Lilly Endowment Community Scholar. From left to right: Tinker is shown with parents Jared Tinker and Angie and John Slentz, and Community Foundation of DeKalb County representatives Hailey Carmer LaMaster and Tanya Young.

# Values

We show people how philanthropy can ensure positive change in DeKalb County.

# Vision

Community Foundation DeKalb County is recognized as the trusted organization for giving, granting, and philanthropic opportunity, creating quality of life experiences for DeKalb County residents.

# Mission

Community Foundation DeKalb County promotes community philanthropy by offering local citizens the opportunity to leave a charitable legacy that will sustain and improve life in our county.

## Financial Position

|   | 2022                       | 2021                       |
|---|----------------------------|----------------------------|
| <b>ASSETS</b>                             |                            |                            |
| Cash and cash equivalents                 | \$1,766,812                | \$2,599,889                |
| Prepaid expenses                          | \$23,296                   | \$3,132                    |
| Pledges receivable, net                   | \$50,745                   | \$24,272                   |
| Investments                               | <u>\$20,354,208</u>        | <u>\$22,983,942</u>        |
| Property and equipment                    |                            |                            |
| Steininger building                       | \$678,746                  | \$672,210                  |
| Land                                      | \$109,184                  | \$109,184                  |
| Office equipment                          | <u>\$144,626</u>           | <u>\$144,626</u>           |
| Subtotal                                  | \$932,556                  | \$926,020                  |
| Less accumulated depreciation             | <u>\$348,988</u>           | <u>\$320,765</u>           |
| Property and equipment total              | \$583,568                  | \$605,255                  |
| <b>Total</b>                              | <b><u>\$22,778,629</u></b> | <b><u>\$26,216,490</u></b> |
| <b>LIABILITIES</b>                        |                            |                            |
| Accounts payable                          | \$71,202                   | \$46,690                   |
| Accrued liabilities                       | \$883                      | \$773                      |
| Grants payable                            | \$269,690                  | \$292,317                  |
| Agency funds                              | \$1,972,607                | \$2,359,666                |
| <b>Total</b>                              | <b><u>\$2,314,382</u></b>  | <b><u>\$2,699,446</u></b>  |
| <b>NET ASSETS</b>                         |                            |                            |
| Without donor restrictions                | \$315,23                   | \$356,010                  |
| With donor restrictions                   | \$20,149,017               | \$23,161,034               |
| <b>Total</b>                              | <b><u>\$20,464,247</u></b> | <b><u>\$23,517,044</u></b> |
| <b>Total Liabilities &amp; Net Assets</b> | <b><u>\$22,778,629</u></b> | <b><u>\$26,216,490</u></b> |

## Statement of Activities

|   | 2022                          |                            |                      | 2021                          |                            |                     |
|---|-------------------------------|----------------------------|----------------------|-------------------------------|----------------------------|---------------------|
|   | Without Donor<br>Restrictions | With Donor<br>Restrictions | Total                | Without Donor<br>Restrictions | With Donor<br>Restrictions | Total               |
| <b>OPERATING SUPPORT AND REVENUE</b>                              |                               |                            |                      |                               |                            |                     |
| Pledges and contributions   | \$26,006                      | \$936,820                  | \$962,826            | \$17,761                      | \$507,146                  | \$524,907           |
| In-kind contributions   |                               | \$182,014                  | \$182,014            |                               | \$230,097                  | \$230,097           |
| Administrative fee income   | \$316,875                     |                            | \$316,875            | \$355,685                     |                            | \$355,685           |
| Investment return (loss), net                                     | \$1,932                       | (\$3,101,126)              | (\$3,099,194)        | \$16,453                      | \$2,347,212                | \$2,363,665         |
| Discount on pledges receivable                                    |                               |                            |                      |                               | \$3,243                    | \$3,243             |
| Loss on disposal of equipment                                     |                               |                            |                      | (\$133)                       |                            | (\$133)             |
| Other income  | \$11,699                      |                            | \$11,699             | \$243                         |                            | \$243               |
| <b>Total</b>  | <b>\$356,512</b>              | <b>(\$1,982,292)</b>       | <b>(\$1,625,780)</b> | <b>\$390,009</b>              | <b>\$3,087,698</b>         | <b>\$3,477,707</b>  |
| <b>NET ASSETS RELEASED FROM RESTRICTIONS</b>                      |                               |                            |                      |                               |                            |                     |
| Satisfaction of purpose restrictions                              | \$353,832                     | (\$353,832)                |                      | \$538,366                     | (\$538,366)                |                     |
| Net assets released from restrictions pursuant to spending policy | \$675,893                     | (\$675,893)                |                      | \$594,973                     | (\$594,973)                |                     |
| <b>OPERATING EXPENSES</b>   |                               |                            |                      |                               |                            |                     |
| Program services  |                               |                            |                      |                               |                            |                     |
| Grantmaking   | \$834,270                     |                            | \$834,270            | \$837,419                     |                            | \$837,419           |
| Supporting services   |                               |                            |                      |                               |                            |                     |
| Management and general  | \$508,225                     |                            | \$508,225            | \$547,358                     |                            | \$547,358           |
| Fundraising expenses  | \$84,522                      |                            | \$84,522             | \$79,256                      |                            | \$79,256            |
| <b>Total</b>  | <b>\$1,427,017</b>            |                            | <b>\$1,427,017</b>   | <b>\$1,464,033</b>            |                            | <b>\$1,464,033</b>  |
| Change In Net Assets  | (\$40,780)                    | (\$3,012,017)              | (\$3,052,797)        | \$59,315                      | \$1,954,359                | \$2,013,674         |
| Net assets at beginning of year                                   | \$356,010                     | \$23,161,034               | \$23,517,044         | \$296,695                     | \$21,206,675               | \$21,503,370        |
| <b>Net assets at end of year</b>                                  | <b>\$315,230</b>              | <b>\$20,149,017</b>        | <b>\$20,464,247</b>  | <b>\$356,010</b>              | <b>\$23,161,034</b>        | <b>\$23,517,044</b> |

The Community Foundation is supported by the DeKalb County Fund for the Future, Inc. and the Steinger Center for the Community Foundation of DeKalb County, LLC.

# New Funds in 2022

One of the main goals for any community foundation is to work with individuals and organizations to design a plan and set up funds to support their causes in perpetuity. Anyone can give to these funds.

**Children First Center Endowment Fund:** Provide support to the general operations or programming of Children First Center.



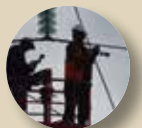
**Verlyn Johnson Scholarship Fund:** Provide support for educational scholarships for students who are accepted into and attend an accredited educational organization, and who meet the following criteria: graduating senior from any DeKalb County high school; plans to attend an accredited technical school or college; has financial need; possesses strong academic behavior.



**DeKalb County Community Leadership & Development Fund:** Provide support for community leadership and community development initiatives and opportunities in DeKalb County.



**Jody Kessler Skilled Trades Scholarship Fund:** Provide support for educational scholarships for students who are accepted into and attend an accredited public or private institution of higher learning and who meet the following criteria: graduating high school senior (homeschool, public or private) residing in DeKalb County; pursuing a vocational/technical degree (certificate, associates or beyond); has financial need.



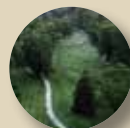
**Greenawalt Career Technical Education Scholarship Fund:** Provide support for educational scholarships for students who are accepted into and attend accredited two-year public or private institutions of higher learning, and who meet the following criteria: graduating high school seniors in DeKalb County; are pursuing an associate's degree with preference given to students who plan to study and pursue a career in construction or a related field.



**Kehl-Greenawalt Conservation Education Scholarship Fund:** Provide support for educational scholarships for students who are accepted into and attend an accredited two-year or four-year public or private institution of higher learning and who meet the following criteria: graduating high school senior (homeschool, public or private) residing in DeKalb County; plans to pursue a bachelor's degree with preference given to students who plan to study and pursue a career in Conservation or Wildlife Biology.



**Greenhurst Commons Fund:** The exclusive purpose of the fund shall be to provide support to improve and maintain Greenhurst Commons, a non-developed tract of real estate located in Auburn, Indiana, in partnership with ACRES Inc.



**Kehl-Greenawalt Nursing Scholarship Fund:** Provide support for educational scholarships for students who are accepted into and attend an accredited four-year public or private institution of higher learning and who meet the following criteria: a graduating high school senior (homeschool, public or private) residing in DeKalb County; plans to pursue a bachelor's degree with preference given to students who plan to study and pursue a career in nursing and/or nurse practitioner.



**Image of Hope Ranch Endowment Fund:** Provide support to the general operations or future programs from Image of Hope Ranch.



**Jon Thomas Smith Memorial Vocational Scholarship Fund:** Provide support for educational scholarships for students who are accepted into and attend an accredited two-year public or private institution of higher learning and who meet the following criteria: graduating senior from any DeKalb County high school (public or private); pursuing a vocational/technical degree (certificate or associates); has financial need.



**Swaim Community Impact Fund:** Provide support for the communities most pressing need for programs or activities that fulfill charitable or other exempt purposes that are consistent with the mission of the Community Foundation.



**Kathy (Oiler) & Mark Swaim Agricultural Scholarship Fund:** Provide support for educational scholarships for students who are accepted into and attend an accredited four-year public or private institution of higher learning and who meet the following criteria: graduating senior residing in DeKalb County; pursuing a bachelor's degree in agriculture or a related field.

## DeKalb Literacy Fund

The DeKalb County Literacy Fund was created in 2003 for the purpose of funding the development of lifelong learners in DeKalb County and to create and support literacy efforts that benefit DeKalb County citizens. In 2004, a group of community members joined together and formed the Mother Goose on the Loose Giving Circle to help support the Literacy Fund. Thanks to their support and fundraising efforts, over \$80,000 has been granted to fund literacy programs and projects in the community.

Historically the Giving Circle has entertained grant applications once a year with a deadline of August 31, with the majority of applications coming from local educators. In January 2023, the DeKalb Literacy Fund was included in the Foundation's quarterly grant cycle, making the application available four times a year in the hopes of supporting more efforts for literacy.

The Foundation thanks all of the members of the Mother Goose on the Loose Giving Circle for their support over the years. These grants will now be available for more opportunities to support literacy efforts in DeKalb County.

## List of Current Funds

|  |   |   |   |
|--|---|---|---|
| 30th Anniversary Fund  | Auburn Cord Duesenberg Automobile Museum Endowment Fund               | Bob & Jean Bowman Heritage Farm Fund            | Jake Clifford and Piper Placencia Memorial Endowment Fund for Garrett-Keyser-Butler Educators |
| A Walk To Remember   | Auburn Cord Duesenberg Festival Automotive Scholarship Endowment Fund | The Wayne E. Boyd Scholarship Fund              | Community Grantmaking Fund  |
| Acres Land Trust Endowment Fund  | Auburn Mausoleum Association Fund                                     | Lucy W. Brennan Endowment Fund                  | Community State Bank Neighborly Fund  |
| Action Fund  | Auburn Parks Department Fund  | Steve Bruns Memorial for Rieke Park Trail Fund  | Marcellyn M. Conn Memorial Fund   |
| Agricultural Education Fund for DeKalb County  | Auburn Presbyterian Church Endowment Fund                             | The Bunge Athletic Scholarship Fund             | Ben Davis Memorial Fund   |
| AgriInstitute Fund of DeKalb County  | Auburn Skate Park Fund  | Butler Community Day Care BEE Scholarship       | Kelso and Margaret Davis Community Fund   |
| Aim High Scholarship (Isaac Hague, Helping Hands, Elva A. Tess Likens, Robert and Marie Hughes, Bertha M. Willennar) | Auburn Tri Kappa Pink Out Fund  | Butler Public Library Endowment Fund            | DeKalb Association for Developmentally Disabled, Inc. Fund dba Alliance Industries            |
| Anonymous Donor Advised Fund   | Auburn Waterloo Trail Endowment Fund                                  | Cancer Services DeKalb County Endowment Fund    | DeKalb County Community Leadership & Development Fund   |
| The Raymond, Luella and David Aschleman Scholarship Fund   | Beka's Bread Brigade Fund   | Carr Field Development Fund                     | DeKalb County Community Orchestra   |
| Ashley Volunteer Fire Department Fund  | Big Brothers Big Sisters DeKalb County Endowment Fund                 | Catholic Charities DeKalb County Endowment Fund | DeKalb County Community Scholars Fund (Hilda Campbell, Delbert McBride, Judy Marsh)           |
| Auburn Arts Commission Endowment Fund  | Boomerang Backpacks Fund for DeKalb County                            | Children First Center Endowment Fund            | DeKalb County Council on Aging Endowment Fund   |
| Auburn Business and Professional Women's Club  | Kenneth A. Boseker Memorial Fund                                      |   |   |

# List of Current Funds *continued...*

|  |  |   |  |
|--|--|---|--|
| DeKalb County Courthouse Centennial Fund           | Garrett Hospital Aid Foundation Fund                     | Irwin Mallin Charitable Endowment Fund  | Donald Ruegsegger Scholarship for Christian Leadership Fund  |
| DeKalb County Disaster Response Fund               | Garrett Junior Achievement Endowment Fund                | Donna Martin-Boseker "Loa's Fund"   | Safe Child Fund  |
| DeKalb County Leadership Fund                      | The Garrett Public Library Foundation Fund               | Imogene Mavis Fund  | St. Joseph River Parks, Inc. Fund  |
| DeKalb County Literacy Fund                        | Greenawalt Career Technical Education Scholarship Fund   | Imogene Mavis Music Scholarship Fund  | St. Martin's Healthcare, Inc. Endowment Fund   |
| DeKalb County Master Gardeners Scholarship Fund    | Greenhurst Commons Fund                                  | Quentin K. and Gladys F. Mavis Music Fund                                       | Dorothy Schrader Eckhart Public Library Endowment Fund   |
| DeKalb County Outdoor Theater, Inc. Endowment Fund | Mary Lois Murphy Grimm Scholarship Fund                  | McIntosh Arts and Community Collaborative Fund                                  | Tony Sechler Memorial Fund   |
| DeKalb Outdoor Theater                             | Julia Hague Fund   | George Stanley Means and Rose Ilean Means Fund                                  | Shelter Ministries, Inc. Fund  |
| DeKalb County Promise Operating Fund               | Jack & Sharon Hannes Scholarship Fund                    | Kenneth D. Metzger Scholarship Fund   | Shelter Ministries Food and Clothing Bank Building Project Fund  |
| DeKalb County Promise Pre-K Student Account Fund   | Matthew A. Harger Memorial Fund                          | Metzger Park Endowment Fund   | Rebecca "Becky" Slentz Fund for Early Childhood Literacy   |
| DeKalb County Promise Student Account Fund         | Hearten House DeKalb County Endowment Fund               | Miss Northeast Scholarship Pageant Program Fund                                 | John Martin Smith and Barbara Clark Smith Heritage Fund  |
| DeKalb County Soil and Water Conservation Fund     | Barbara Herzer Scholarship Fund                          | Northeastern Center Child and Adolescent Project Fund                           | Jon Thomas Smith Memorial Vocational Scholarship Fund  |
| DeKalb Humane Society Endowment Fund               | Carol L. Hill Memorial Scholarship Fund                  | Northeastern Center Community Mental Health Endowment Fund                      | Sirleine M. Smith Library Science Scholarship  |
| DeKalb Memorial Hospital Fund                      | Lynn Holsinger and Josephine G. Holsinger Fund           | Lucas A. Oberkiser Scholarship Fund   | Judy Sorg Education Fund   |
| DeKalb's VOICE Endowment Fund                      | Image of Hope Ranch Endowment Fund                       | Wendy J. Oberlin Operating Endowment for the Community Foundation DeKalb County | Dr. James P. Spink Memorial Scholarship Fund   |
| Peggy Dirksen Fund for the Arts                    | Impact Institute Nonpermanent Fund                       | O'Malley Charitable Fund  | Starkey Science Endowment Fund   |
| Early Childhood Development Fund                   | Verlyn Johnson Scholarship Fund                          | Operating Fund of Community Foundation DeKalb County                            | Steininger Center for Community Foundation of DeKalb County LLC  |
| The Charles Eckhart Endowment Fund                 | Coach Bill Jones Memorial Scholarship Fund               | Jessica Otterstedt Memorial Scholarship Fund                                    | Warren G. Sunday Memorial Scholarship Fund   |
| The Eckhart Public Library Endowment Fund          | Junior Achievement Serving East Central DeKalb           | Derek L. Padilla Scholarship Fund   | Sustain the Future Operating Endowment Fund  |
| Gloria Fink Eckhart Public Library Endowment Fund  | Jane Elmira Mullen Kempf Communications Scholarship Fund | Parker Hannifin Scholarship Fund  | Swaim Community Impact Fund  |
| Sarah Jean Eldridge Fund                           | Jody Kessler Skilled Trades Scholarship Fund             | Walter S. Penfield Fund   | Kathie (Oiler) & Mark Swaim Agricultural Scholarship Fund  |
| Empower Grant                                      | Sharon A. Kiefer Memorial Fund                           | Dr. Keith E. Perry Memorial Scholarship Fund                                    | Town of Corunna Fund   |
| Family Fund of Agapé                               | JaBraun Knox Scholarship Fund                            | Winifred Peters Scholarship Fund  | Town of Waterloo   |
| Leland R. Fee Scholarship                          | Krehl-Greenawalt Conservation Education Scholarship Fund | Plaza 35 Fund   | Tri Kappa Scholarship Fund   |
| Rex A. Feller Memorial Scholarship Fund            | Krehl-Greenawalt Nursing Scholarship Fund                | Questa Scholars Fund  | United Way of DeKalb County Fund   |
| Chuck Fifer Downtown Auburn Fund                   | Derald D. Kruse "Student of Life" Scholarship Fund       | Randa Community Fund  | Veteran Endowment Fund   |
| Chuck Fifer Memorial Scholarship Fund              | Lakewood Park Christian School Endowment Fund            | Randinelli Family Instrumental Music Scholarship Fund                           | Memorial Fund for the Children of David and Ruth Walters: Susie (Walters) Bishop, Annette (Walters) Bowman and Ed Walters) |
| Harry Fisk Fund                                    | Don Lash Fund  | Mary O. Rench Fund for Animals  | Waterloo to Auburn Trail   |
| Freedom Academy DeKalb County Endowment Fund       | The Laurie Family Golf Scholarship                       | Lukas Brian Rieke Scholarship Fund  | Waterloo Veterans Memorial Park Fund   |
| Friends of Animals Fund                            | Lilly Endowment Scholarship Promotional Fund             | Rise, Inc. Fund   | Robert D. and Virginia E. White Scholarship Fund   |





# List of Current Funds *continued...*

Denny and ClaraMary Winebrenner  
Advised Fund

George O. Witwer Advised Fund

Wyatt Memorial Endowment Fund

Melanie A. Yarian Memorial Fund

YMCA of DeKalb County, Inc.  
Endowment Fund

Youth For Christ of Northern Indiana  
Endowment Fund

Youth Philanthropy Fund for DeKalb  
County

YWCA DeKalb County Endowment  
Fund

Pat Zakula Legacy Fund

Betty J. Zern Endowment Fund

## Memorials from Donors

**Raymond and Luella Aschleman**  
Sandra K. Aschleman

**Guy Bard**  
Patch and Terry Hines

**Steve Bruns**  
Norman E. and Peggy J. Yoder

**Retha Butler**  
Dr. James A. and Rachel S. Roberts

**R. Royce and Geraldine Clark**  
Jack R. Clark

**Priscilla Creaven**  
Auburn Arts Commission, Inc

**DaKota and Kaliska**  
Sheri L. Strong

**Jane Davidson**  
Susan L. Randa

**Karen Diehl**  
Jeffrey G. LaMaster and Hailey E. Carmer LaMaster

**Peg Dircksen**  
Thomas R. Neeld

**Kay Finchum**  
Auburn Community Band, Inc.  
Barbara Bushnell  
Kathryn K. Chizmar  
Community Foundation DeKalb County Board  
and Staff  
Lyle J. and Teresa J. Ewing  
James A. Finchum  
Steven A. and Janelle H. Graber  
Thomas W. and Leslie P. Kitterman  
Ladies' Literary Club of Auburn  
Stephen and Alyce Schnelker  
Gary B. and Sherri A. Sible  
Gregory N. and Catherine L. Vick  
Myla J. Wells  
Norman E. and Peggy J. Yoder

**Maxine Harvey**  
Norman E. and Peggy J. Yoder

**Tom Hoesly**  
David Randa  
James and Kathy S. Randa  
Susan L. Randa

**Darrell Hulbert**  
Rathburn Tool & Manufacturing Employees

**Dale Hummer**  
Ronald and Cheryl Clark  
Community Foundation DeKalb County Board  
and Staff  
Jan E. and Sandra L. David  
Eastside Junior/Senior High School  
Fountain Central Mustang Club  
Kenneth E. and Anne E. Fowble  
Robert A. and Carma Gaier  
Bruce D. and Jill A. Hamilton  
Dr. K. Michael and Sandra Hayes  
Richard L. and Joann Helfrich  
Randall W. and Melissa K. Irk  
Rodrick O. and Barbara J. Knox  
Mytron and Kathy Lisby  
Dr. Douglas C. and Barbara Olenyik Morrow  
Susan L. Randa  
Stephanie Ross  
Scheumann Dental Associates  
Tom L. and Cathy A. Smith  
Stephen W. and Kelly R. Snider  
Verbin R. and Nancy E. Sobasky  
Joyce Stuckey  
Cathy Swank  
Keith M. and Cindy L. Turner  
Brad J. Weber  
Jerry L. and Sharon R. Zonker

**Imogene Mavis**  
Norman E. and Peggy J. Yoder

**Robert McNabb**  
Timothy E. and Amanda S. Haynes

**Carolyn Murdock**  
Marie Truesdale

**Roger Myers**  
Jack R. Clark

**Ronald W. Payton**  
Sheri L. Strong

**Roger Rinehold**  
Jerry Rathburn and Friends

**Roberta Schaab**  
Dr. James A. and Rachel S. Roberts

**Mike and Becky Slentz**  
Cheryl E. Rogers

**Sirleine Smith**  
Auburn Arts Commission, Inc

**John Martin and Barbara "Bobbie"  
Smith**  
Dr. James A. and Rachel S. Roberts

**Pauline Smith**  
Norman E. and Peggy J. Yoder

**Kathie Swaim**  
Auburn Arts Commission Inc  
Forrest M. Bates  
Catherine M. Bell  
Jack N. Bercaw  
Joan M. Hursh  
Jeffrey and Becky Mulcahey  
Karen K. Parker  
Allen E. Pease  
Dr. James A. and Rachel S. Roberts  
Philip M. Shultz  
Mark E. Swaim on behalf of Tonya J. Reinoehl and  
Rosemary Springer  
Mark Swaim  
Gregory J. and Marcia K. Weller

**Gene Warstler**  
Janet M. Warstler

**Fern Wilcoxson**  
Kenneth L. Wilcoxson

**George Witwer**  
Dr. Douglas C. and Barbara Olenyik Morrow

**Annabelle Yoder**  
Arthur C. and Karen K.(Yoder) Bartlett  
Jerry L. and Paula L. Yoder  
Norman E. and Peggy J. Yoder

**Everett Yoder**  
Norman E. and Peggy J. Yoder

**Helen Zelinger**  
Susan L. Randa

# Tributes

In Honor of

**Janelle Graber**

Dr. James A. and Rachel S. Roberts

In Honor of

**Lili Hand**

Norman E. and Peggy J. Yoder

In Honor of

**Bryan Nugen's service on  
the Board of Directors**  
Community Foundation DeKalb County  
Board and Staff

In Honor of

**Sandy Proud**

Dr. James A. and Rachel S. Roberts

In Honor of

**Sue Randa's service on  
the Grant Committee**  
Community Foundation DeKalb County  
Board and Staff

In Honor of

**Terry Rayle's service on  
the Board of Directors**  
Community Foundation DeKalb County  
Board and Staff

In Honor to the

**Service of Kathie Swaim**  
Matthew A. and Elizabeth A. Bechdol

In Honor of all

**Veterans**

Kenneth D. and Norma J. Workman

# Gifts from Donors

3 Rivers Federal Credit Union

Hannah Albright

David S. and Sue Ann Albright

Allstate Life Insurance Company  
Live and Annuity Claims on  
behalf of George Witwer's  
Estate

Kathleen Alter

Ambassador Enterprises, LLC

The American Legion Post 178

American Legion DeKalb Post #97

Apple Tree Center Inc.

Sandra K. Aschleman

City of Auburn

Auburn Arts Commission Inc

Auburn Community Band, Inc.

Auburn Cord Duesenberg  
Automobile Museum

Auburn Main Street

Auburn Family Dentistry

Auburn Kiwanis Club

Auburn Lions Club

Autokraft Auto Body LLC

The Ronald E. Ball and Wilma  
J. Ball Charitable Remainder  
Unitrust

Debra J. Barth

Arthur C. and Karen K.(Yoder)  
Bartlett

Forrest M. Bates

Mark L. and Kelly A. Beakas

Matthew A. and Elizabeth A.  
Bechdol

Catherine M. Bell

Edward C. Benbow

Karla Benitez

Jack N. Bercaw

Bobby Lynn Bigwell

Daniel B. Bonkoski

Lonnie J. and Teresa M. Brown

Thomas L. Bryant

Barbara Bushnell

City of Butler

Butler Public Library

Campbell & Fetter Bank

Mary M. Campbell

Carbaugh Jewelers

Chad and Allison Carnahan

Susan Carpenter

Catalaunch, LLC on behalf of  
Patronicity

John E. and Cheryl S. Chalmers

Roy L. and Roberta J. Charleswood

Kathryn K. Chizmar

Jack R. Clark

Justin A. Clark

Ronald and Cheryl Clark

Rita A. Collins

Community Foundation DeKalb  
County Board and Staff

The Community Learning Center,  
Inc.

Wayne E. and T. Jean Culbertson

Katrina H. Custer

Jan E. and Sandra L. David

Darcy Davidson Armstrong

John P. and Jennifer J. Davidson

Joan Davis

Randall J. Deetz

DeKalb County Central United  
School District

DeKalb County Master Gardeners

DeKalb County Treasurer

DeKalb County Treatment Court  
Foundation, Inc.

DeKalb County Visitors Bureau

The DeKalb High School Volleyball  
Team

The Dekko Foundation

Downtown Auburn Business  
Association

Joe Dunn

Easter Seals ARC of NE Indiana

Eastside Area Community  
Foundation, Inc.

Eastside Junior/Senior High School

Marlin J. and Natasha L. Eicher

Elite Martial Arts

Estate of Verlyn Johnson

Estate of Wayne E. Boyd

Lyle J. and Teresa J. Ewing

The Farmers & Merchants State  
Bank

FCl Construction

Fred C. and Mary Anna Feitler

Julie Fellers Hook

James A. Finchum

Treva M. Finn

Nancy E. Fites

Renee A. Florin

Fort Wayne Cinema Center

Fountain Central Mustang Club

Kenneth E. and Anne E. Fowble

Steven E. Frick

Mark A. Friend

Robert A. and Carma Gaier

City of Garrett

Max & Jewel Geist

Paul Gilbert

Kelly I. Gomes

Dr. William D. and Mary Goudy

Steven A. and Janelle H. Graber

Darle E. Hagan

Bruce D. and Jill A. Hamilton

Curtis L. Harriman

Sherry L. Harriman

Loraine Hartranft

Dr. C.B. and Carol Jean Hathaway  
Jr.

Sarah M. Hathaway

Dr. K. Michael and Sandra Hayes

Timothy E. and Amanda S. Haynes

Hearten House

William G. and Julia D. Heimach

Richard L. and Joann Helfrich

Gary D. and Barbara J. Henderson

Michael K. and Judy K. Hey

Patch and Terry Hines

Hixson Sand & Gravel, Inc.

Steven J. Hoffer

David J. and Angela L. Holt

Hoosiers Feeding The Hungry

Donell S. Housel

Dale and Sharon Hummer

Joan M. Hursh

Illinois State Treasurer

Image of Hope Ranch, Inc.

Independent Colleges of Indiana,  
Inc.

Indiana Philanthropy Alliance

Randall W. and Melissa K. Irk

The James Foundation, Inc

Rick L. and Vicki L. James

Kent Johnson

Kent D. and Shelley R. Johnson

Judy A. Morrill Recreation Center

Dr. Jeffrey L. and Karen G. Justice

Kappa Kappa Kappa Sorority  
(Alpha Pi Chapter)

|  |   |   |  |
|--|---|---|--|
| Kappa Kappa Kappa, Inc. Auburn Associate Chapter             | Jeffrey and Becky Mulcahey  | Mary K. Schmidt                         | Keith M. and Cindy L. Turner           |
| Kenton Kaufman   | David M. and Susan J. Neal  | Stephen and Alyce Schnelker             | United Way of DeKalb County, Inc.      |
| Jeffery V. and Colleen M. Kempf                              | Thomas R. Neeld   | SCP Limited Holdings, LLC               | Grant Van Horne                        |
| Peter A. Kempf   | Steven Neumann  | Sculpin Folar                           | VFW Post 2749                          |
| Richard A. and Barbara A. Kempf                              | Northern Indiana public Service Company LLC                         | Michael G. Sebert                       | Greg Vick                              |
| Jay R. and Sandra K. Kern                                    | Nucor Building Systems  | Seiler Excavating, Inc                  | Gregory N. and Catherine L. Vick       |
| Dennis L. and Mary Ann Ketzenberger                          | J. Bryan Nugen, Nugen Law   | Richard G. and Suzanne C. Shankle       | Villas Of Coventry Homeowners, Inc.    |
| Thomas W. and Leslie P. Kitterman                            | Olive B. Cole Foundation, Inc.                                      | Shifters Car Club, Inc.                 | Dr. Douglas C. Morrow - Vision Source  |
| Rodrick O. and Barbara J. Knox                               | Kevin J. and Tamzon A. O'Malley                                     | Philip M. Shultz                        | Walmart Foundation                     |
| Joseph W. and Patricia L. Kobiela                            | Parker Hannifin Corporation   | Gary B. Sible                           | Walmart of Auburn                      |
| Jennette Kobiela-Mondor                                      | Karen K. Parker   | Gary B and Sherri A. Sible              | David L. and Ruth A. Walters           |
| Twylia Krehl   | Kerry Parrott   | Jerry Sigler                            | Ricky A. and Kelly J. Walters          |
| David A. and Patricia A. Kruse                               | Allen E. Pease  | Laurine Skelly                          | Janet M. Warstler                      |
| Dennis K. Kruse  | Peoples Charitable Foundation on behalf of Russell and Garnet Spice | Mary M. Smaltz                          | Town of Waterloo                       |
| Stephen K. and Linda M. Kummernuss                           | Phyllis Perry   | Alicia Smith                            | Waterloo Grant Township Public Library |
| The Ladies' Literary Club of Auburn                          | Wanda Phillips  | Barry A. and Leabeth Smith              | Douglas and Tonya Weaver               |
| Lake City Bank   | Steven E. and Nicki D. Post   | Dale A. and Delores M. Smith            | Florence J. Webb                       |
| Jeffrey G. LaMaster and Hailey E. Carmer LaMaster            | Virginia A. Post  | Tom L. and Cathy A. Smith               | Brad J. Weber                          |
| Janet M. Landrum   | Propane People  | Gretel Smith                            | W. Erik and Tamera Weber               |
| Gregory A. and Holly R. Lantz                                | David Randa   | Stephen W. and Kelly R. Snider          | W. Erik Weber                          |
| The Laurels of DeKalb  | James and Kathy S. Randa  | Mark Snyder                             | Gregory J. and Marcia K. Weller        |
| Thomas S. and Patricia A. Laverghetta                        | Susan L. Randa  | Verbin R. and Nancy E. Sobasky          | Myla J. Wells                          |
| Kayleen M. Leonard   | Philip M. and Dawn E. Randall                                       | James S. Sparrow                        | Eric C. Westrick                       |
| Lightner Law Firm, P.C.                                      | Ruth E. Randinelli  | Harold and Sandy Spiess                 | Darryl and Susan Whittington           |
| Mytron and Kathy Lisby                                       | Kimberly A. Randinelli  | Spiral Financial, Inc.                  | Wible Realty                           |
| Loyal Order of Mosse Lodge #566                              | Rathburn Tool & Manufacturing                                       | Rosemary Springer                       | Kenneth L. Wilcoxson                   |
| Curtis R. and Cassandra G. Lynch                             | Rathburn Tool & Manufacturing Employees                             | Richard Squier, Jr.                     | Kameron Wilkerson                      |
| Robert S. and Kathleen A. McClain                            | Jerry Rathburn and Friends  | St. Martin's Healthcare, Inc.           | Zachary D. and Laura A. Wills          |
| David L. and Jayne A. McClellan                              | Grandchildren of Jerry Rathburn                                     | Stewart, Brimmer, Peters, & Donovan Inc | Denny and ClaraMary Winebrenner        |
| Leonard McCollough   | Terry L. and Mary Ellen Rayle                                       | Charles R. and Kay M. Stiltner          | David L. and Joan E. Wolff             |
| Becky McDonald   | Carol S. Reese  | Larry G. Stomm                          | Antwan Woods                           |
| Glen McDonald  | Tonya J. Reinoehl   | Sheri L. Strong                         | Kenneth D. and Norma J. Workman        |
| McLaughlin Tax Accounting & Management Advisory Services LLC | Rieke Corporation Foundation  | Joyce Stuckey                           | Lisa A. Yarian                         |
| Ian A. and Paula M. Mercer                                   | Glenn and Thelma Rieke Foundation                                   | Charlotte L. Suntken                    | YMCA of DeKalb County, Inc.            |
| Kenneth D. Metzger   | Richard S. and Alaina L. Ring                                       | Janet K. Sutton                         | Jerry L. and Paula L. Yoder            |
| Sidney B. Meyer  | Robert W. Baird & Co. Incorporated on behalf of George Witwer       | Mark Swaim                              | Norman E. and Peggy J. Yoder           |
| Belva C. Meyer   | Dr. James A. and Rachel S. Roberts                                  | Cathy Swank                             | Paul and Rebecca S. Yoder              |
| Wayne L. and Carolyn Sue Michael                             | Cheryl E. Rogers  | Sweetwater Sound, Inc.                  | Rebecca S. Yoder                       |
| Midwest Eye Consultants, P.C.                                | Stephanie Ross  | Chad Tallman                            | Tanya C. Young                         |
| James A. and Diana L. Miller                                 | Brian D. and Joy L. Ruegsegger                                      | Richard P. and Lisa M. Teets Jr.        | Charles C. and Tanya C. Young          |
| John M. and Deanna L. Mohre                                  | Lynne Rush  | Thursday Night Ladies Bowling           | Jerry L. and Sharon R. Zonker          |
| Hertha H. Moran  | Cletus Schenkel Jr.   | Scott and Marci Traylor                 |  |
| Dr. Douglas C. and Barbara Olenyik Morrow                    | Scheumann Dental Associates   | Triple C Music LLC                      |  |
|  | Nick Scheumann  | Marie Truesdale                         |  |
|  | Schmidt Properties Limited LLC                                      | Martha Tubbs                            |  |
|  |   | Jeffrey L. and Susan C. Turner          |  |



**Community  
Foundation**  
DEKALB COUNTY



**Stay Connected With Us**



700 South Main Street • P.O. Box 111  
Auburn, in 46706 • 260-925-0311  
[www.cfdekalb.org](http://www.cfdekalb.org) • Email: [info@cfdekalb.org](mailto:info@cfdekalb.org)